

# Transition Perimeter Raceway to Connectrac Floor-Based Raceway Systems

*New way of supplying power and data to Connectrac Flex® and Express Kits with transitions from 2400D® Series or 4000® Series Raceway Systems.*

Combine Connectrac® on-floor raceway solutions with new Legrand transition solutions designed to allow installers more options in how power and data are being supplied to Connectrac Flex® or Express Kit raceway systems.

Supply power and data from 2400D® or 4000® Series perimeter raceway solutions, designed to allow for a smooth transition at the wall edge, and bring within spaces leveraging Connectrac floor-based raceways. When transitioning to Flex® Raceway, the 4000 Series transition supports up to 3-channels, while the 2400 Series transition supports a single channel of Flex® Raceway. Both single channel raceway transitions also support transitioning to a single Express Kit run.



## Supports Power, Data & AV

Transitions are designed to allow for separation of services to be maintained. 4000 Series supports up to 3-channels of Flex® raceway for support of up to 28 CAT6 cables.

## On-Floor and Under-Carpet

Both fittings support transitions to on-floor and under-carpet installations of Connectrac raceways.

## Flex and Express Kit Raceway Compatible

Each transition can work with either the Flex® Raceway or Express Kit systems.

## Modified Entrance Fitting for Flex Raceway

When connecting to a Flex Raceway, a specially designed entrance end fitting must be used that allows for easy termination within the raceway transition.

# 2400D® SERIES AND 4000® SERIES TRANSITIONS FOR CONNECTRAC® FLOOR-BASED RACEWAY SYSTEMS

	Connectrac® Floor Raceway Systems & Compatible Raceway Transitions			
	EXPRESS KIT	1-CHANNEL FLEX RACEWAY	2-CHANNEL FLEX RACEWAY	3-CHANNEL FLEX RACEWAY
<b>4000 Series Raceway</b>	*4000CT1	*4000CT1 & CT.03-A2.2-003	*4000CT2 & CT.03-A2.2-003	*4000CT3 & CT.03-A2.2-003
<b>2400D Series Raceway</b>	*2400CT1	*2400CT1 & CT.03-A2.2-003	Not Available	Not Available

\*Note: For 4000 Series Raceway, replace the \* with either "G" for Gray or "V" for Ivory finish. For 2400D Series Raceway, replace the \* with either "V" for Ivory or "FW" for Fog White finish.

## 4000 Series Raceway Transitions



1-CHANNEL: 4000CT1



2-CHANNEL: 4000CT2



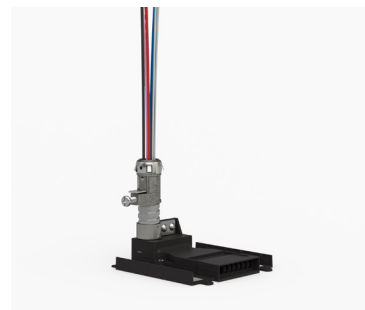
3-CHANNEL: 4000CT3

## 2400D Series Raceway Transition



1-CHANNEL: 2400CT1

## Flex® Raceway Entrance End Fitting for Raceway Transitions



CT.03-A2.2-003

designed to be better.®

