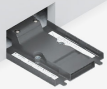
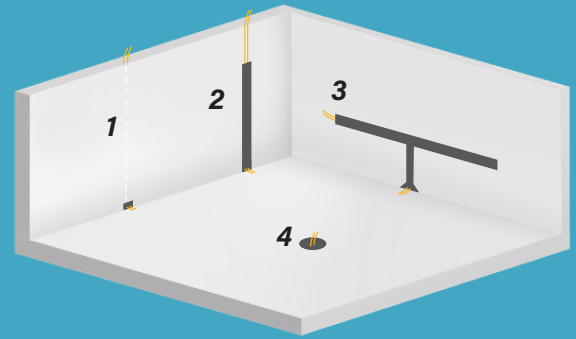


4 Ways to Start a FLEX RACEWAY SYSTEM



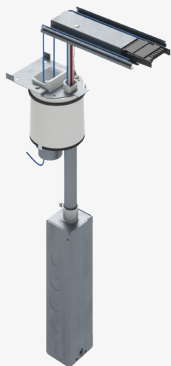
In-Wall



Surface-Mounted



On-Wall Transition



Poke-Thru

WALL-BASED ENTRANCES

1 In-Wall Entrance - Allows for a seamless connection from the base of a wall to the Flex raceway system. It is provided with either a 15' or 30' pre-wired steel conduit that is used to connect to a junction box in the wall or ceiling.

2 Surface-Mounted Entrance - Used when power and data are being supplied outside of the wall. The fitting is available with a pre-wired steel conduit in three lengths, 3', 15' or 30', and includes a wall channel kit that encases the prewired conduit in an aluminum extrusion that is surface mounted to the wall.

3 On-Wall Transition from Legrand 2400® and 4000® Series Raceways - Allows power and data to be supplied from nearby 2400D® Series or 4000® Series perimeter raceway systems. The 2400D transition accommodates a single Powertrac, while the 4000 transition can accommodate up to 3 channels of Powertrac/Datatrac.

OPEN SPACE ENTRANCES

4 Poke-Thru Entrance - Allows the Connectrac Flex® Raceway system to be started at nearly any point along a concrete floor, eliminating the need to feed power and data from a nearby wall. The specially designed poke-thru and entrance fitting provides a low-profile transition that fits into a 4" core-drilled opening, perfect for new builds or retrofits. The poke-thru entrance differs from the wall entrances with a different connection point that mates to either a power hub or powertrac corner as opposed to directly starting with a powertrac.

The Connectrac Flex® Raceway System is a modular power and data distribution system that allows power and data to be distributed along the floor in a low-profile raceway system. The system begins with an entrance fitting that provides the connection point between the building services (power and data) and the modular raceway system.

designed to be better.

CONNECTRAC.
A brand of **legrand**